

What to do with all this open data?

CC BY-SA Lucie-Aimée Kaffee
[[User:Frimelle]]

Three example projects

Tree of life

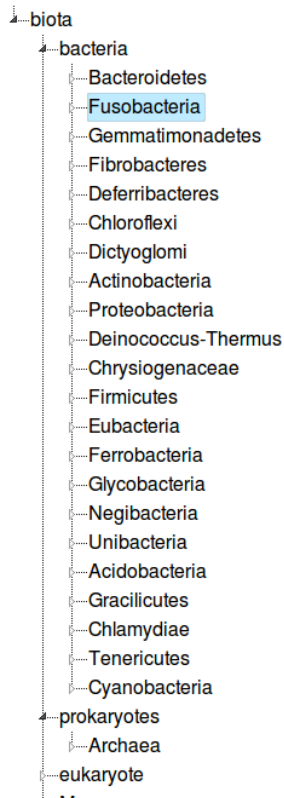
Phones don't grow on trees

Markets Berlin

Tree of life

- taxonomy of all lifeforms
- using [Wikidata](#)'s data
- displaying Wikipedia page for more information
- multiple languages
- now: everything deriving from Biota
- upcoming: representation of interconnection of taxons in Wikidata
- <https://tools.wmflabs.org/tree-of-life/>

Wikidata's Tree of Life



Search Wikipedia

Last edited 2 months ago by Monkbob

Fusobacteria



Fusobacteria are [obligately anaerobic](#) non-sporeforming [Gram-negative bacilli](#).

Since the first reports in the late nineteenth century, various names have been applied to these organisms, sometimes with the same name being applied to different species. More recently, not only have there been changes to the [nomenclature](#), but also attempts to differentiate between species which are believed to be either pathogenic or commensal or both. Because of their [asaccharolytic](#) nature, and a general paucity of positive results in routine biochemical tests, laboratory identification of the fusobacteria has been difficult. However, the application of novel molecular biological techniques to taxonomy has established a

Fusobacteria



Fusobacterium novum in liquid culture.

Scientific classification

Domain: [Bacteria](#)

Phylum: [Fusobacteria](#)

Class: [Fusobacteria](#)

Order: [Fusobacteriales](#)

Genera

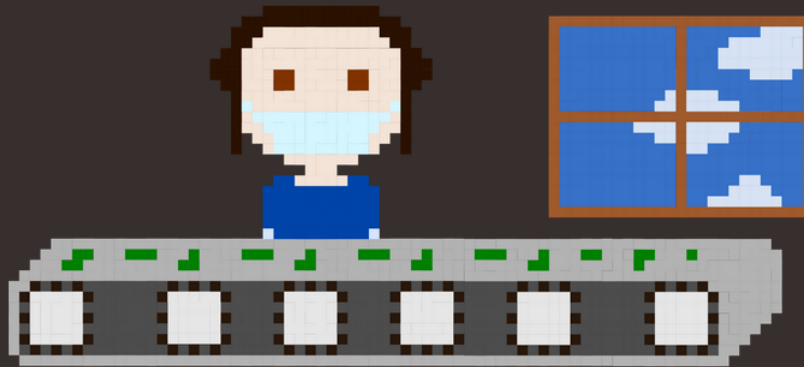
■ [Leptotrichiaceae](#)

Tree of life

- python script to build tree with the taxons and write them into database
- [jstree](#)
- <https://github.com/frimelle/tree-of-life>

Phones don't grow on trees

- pointing out the conflicts in the electronics supply chain
- based on own research
- data on hardware often not available
- “interactive story”/”game” on the working conditions in factories assembling electronics in China
- different options influencing the ongoing of the story
- university project (HTW Berlin)
- <http://phones.dontgrowontre.es/game/>



The factory is huge and there are a lot of people around you. You are in charge of drilling into the circuit boards and you are only allowed to take a break every two hours for ten minutes. You are not really able to have chats with your co-workers, since you have to concentrate as to not make any mistakes. After eight hours, your feet and back hurt. Other workers let you know that you are supposed to work at least two more hours of overtime.

- You feel too tired and go back to the dorms.
- You fulfill the obligation to stay and work two more hours.



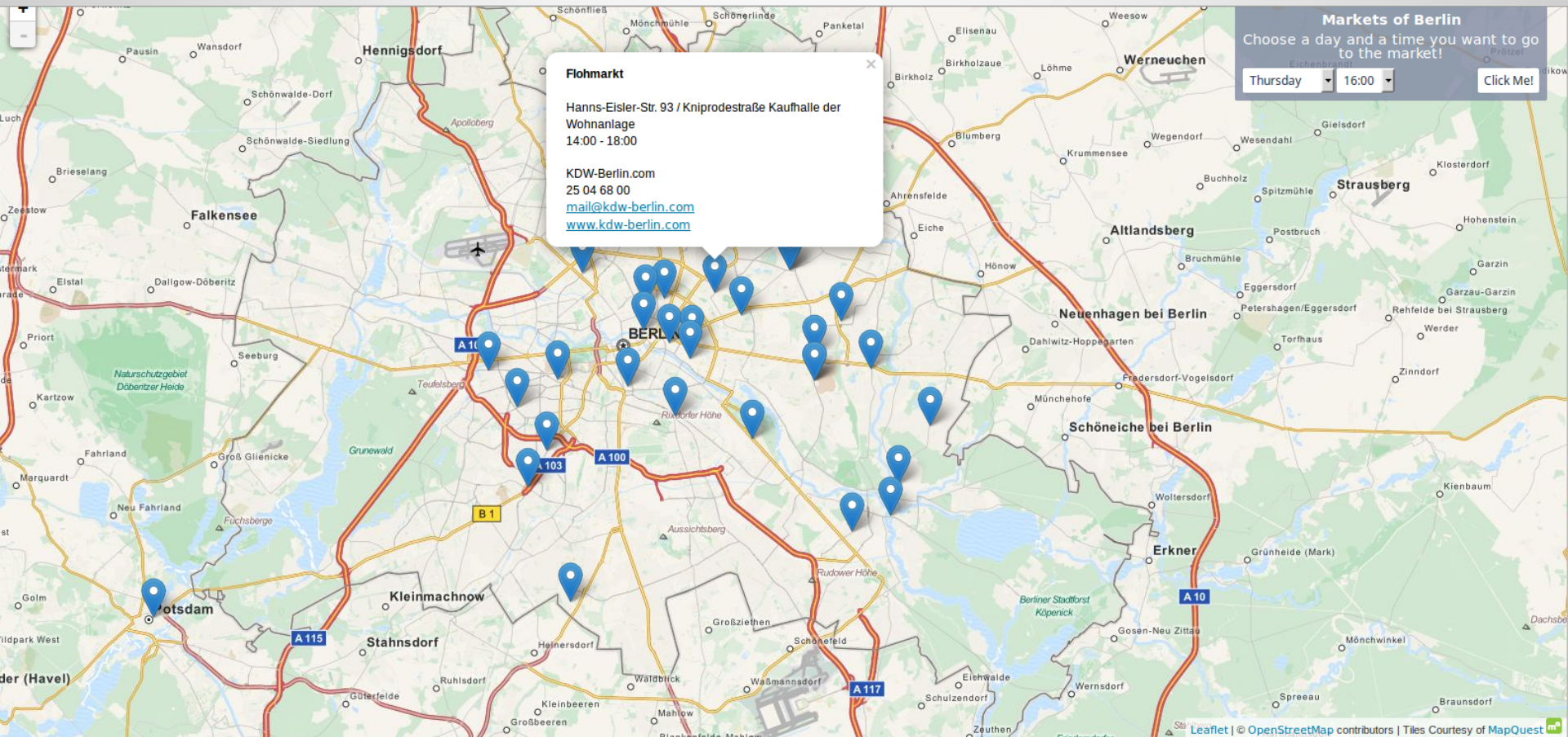
30 ¥ / 4.8 \$

Phones don't grow on trees

- json file with text and data
- pixel images for visualizations
- additionally: [Discover the materials used in your phone and help adding data to the project](#)
- <https://github.com/CSJESC/workerGame/>

Markets Berlin

- Berlin's markets on a map
- using [Berlin Open Data](#)'s data
- select time and date to go to a market
- additional information in popups on markers
- plan to add filters for different kind of markets (flea market, weekly markets, ...)
- <http://frimelle.github.io/markets-berlin/>



Markets Berlin

- make data from Berlin Open Data actually machine readable and consistent first
- in json file
- map: [Open Street Map](#) and [Leaflet](#)
- <https://github.com/frimelle/markets-berlin>

The data

- a lot of data is not available (e.g. data on hardware)
- a lot of data is not really usable or needs to be revised and/or update
- a lot of data is “hidden” somewhere and not used

Conclusion

We need more open data to hack more cool stuff!

Shout out and thanks to the people who worked with me on the projects- especially to Charlie.

Resources

images on phones.dontgrowontre.es/game/: CC-BY-SA Charlie Kritschmar

everything else: CC BY-SA Lucie-Aimée Kaffee